

A Welcoming Opportunity for a Shared Future: Peacebuilding and Supporting Refugees

Dr. Atallah Kuttab

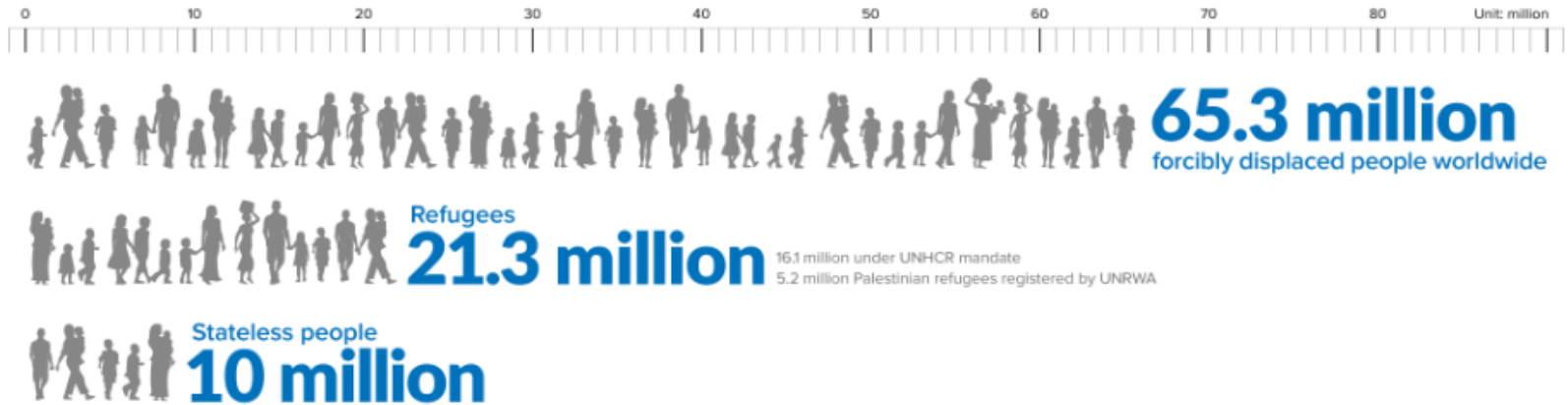
WINGS Forum

Mexico 2017

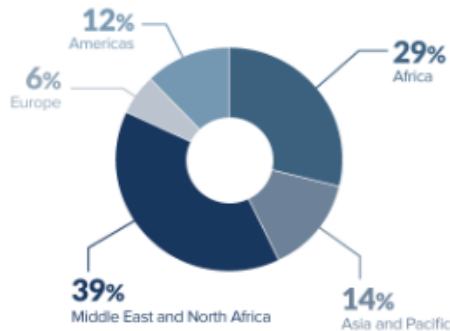


Context

Refugees Around the World in 2016



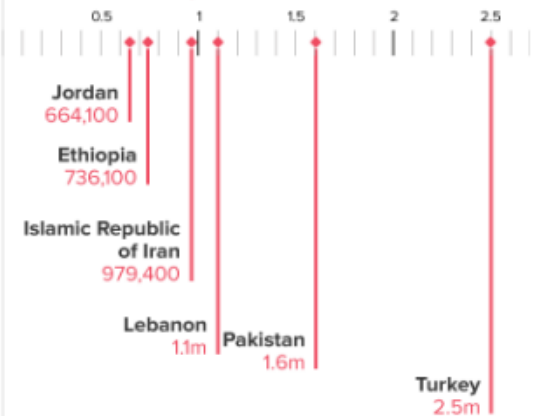
Where the world's displaced people are being hosted



54% of refugees worldwide came from three countries



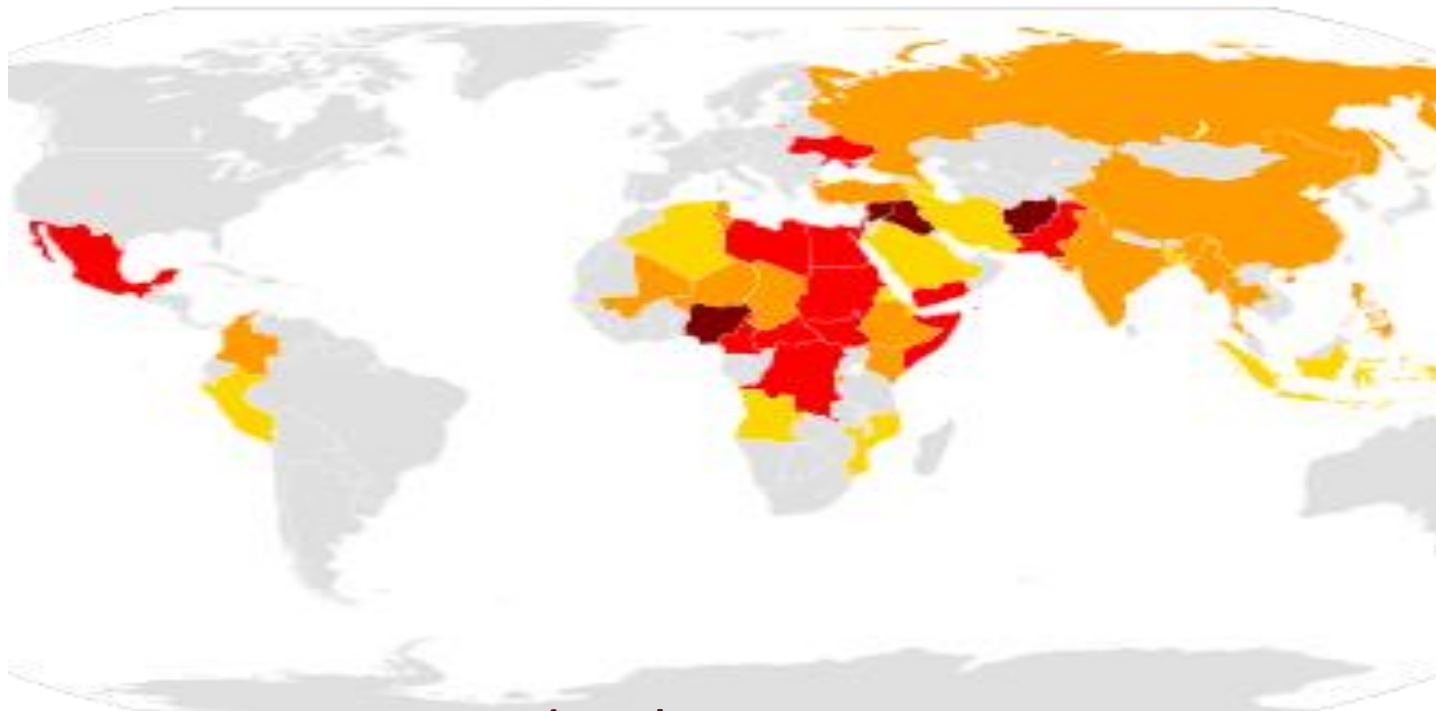
Top hosting countries



Context



Locations of ongoing conflicts worldwide, October 2015



Major wars, 10,000+ deaths in current or past year

Wars, 1,000–9,999 deaths in current or past year

Minor conflicts, 100–999 deaths in current or past year

Clashes, fewer than 100 deaths in current or past year

Context

International Situation of Refugees



- More than 65 Million (1% of world population) are refugees away from home due to safety issues
- More than 50% of those are children below the age of 18.

Context

Refugees from Syria



- More than 11.5 million are refugees.
- 6.5 million are internally displaced
- 5 million are refugees outside Syria with close to 80% in immediate neighboring countries: Turkey (2.2M), Lebanon (1M), Jordan (650,000), and Iraq (250,000)

Context

Syrian Refugees in Jordan - Overview



- Population in Jordan increased by 8% with influx of Syrian refugees
- 80% of Syrian refugees are renting in villages and cities and not in camps
- Only 20% stay in the three camps built for hosting the Syrian refugees (all within couple of hours from Amman the Capital)
- Close to 80% of refugees are women and children below 18 as compared to less than 50% in Europe - Very clear difference of gender and age group between Jordan (and other neighboring countries) versus Europe
- Three camps were built to host Syrian refugees (all within couple of hours from Amman, the Capital), not all full.

Context

Situation of Syrians in Jordan



Syrians are not seen as aliens in Jordan as all Eastern Mediterranean countries (historic Palestine, Syria, Lebanon and Jordan with parts of north Iraq) are considered as "Sham" Countries and people are considered as "Shwam". Therefore, conflict issues with Syrian refugees are generally typical ones that run in any society namely: (a) urban - rural, (b) sectarian - fundamentalism, (c) rich- poor

Context

Specific Conflict Issues



- On Host Communities: employment competition, stress on public services and infrastructure, pushing up rents, donors supporting refugees and not host communities
- School Participation: high drop out among Syrian children (boys to work and girls for "safety" or early marriage)

How Philanthropy Is Responding



- Asserting human rights & protection of refugees (considering gender, inclusion, etc.)
- Helping in receiving and integrating refugees in host communities and camps.
- Helping host communities cope with influx and increased pressure on already slim resources.
- Helping in mitigating conflict between refugees and host communities.

Challenges



- Ensure sensitivity to cultural issues especially for refugees in Europe (cooperation with Syrian NGOs)
- Involve those affected in planning and implementation.
- Balancing needs of refugees and maintaining the support to ensure life quality of host communities.
- How much funds allocated for development moved to dealing with refugee crisis?