

SURVEY RESULTS

ACADEMIC / EDUCATION INSTITUTIONS SERVING PHILANTHROPY

- Online survey (August/ September 2016)
- 19 responses were received from about 60 institutions mapped

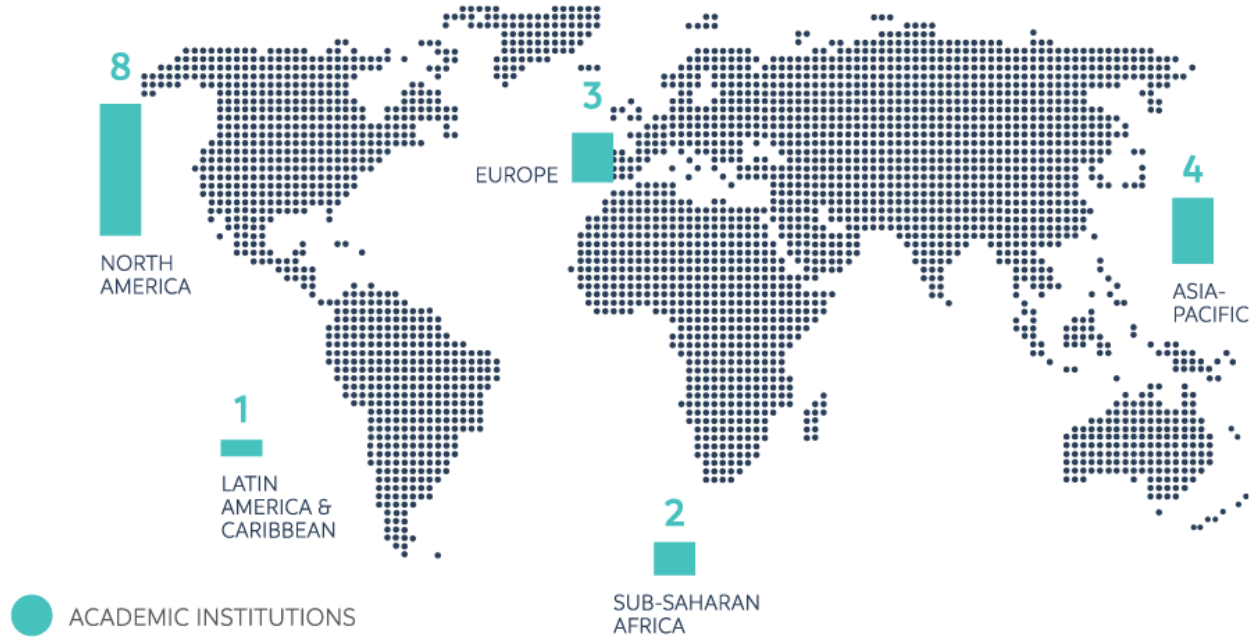
List of respondents to the academic survey

- Ashoka University, Centre for Social Impact and Philanthropy
- ESSEC Business School, ESSEC Philanthropy Chair
- Fundação Getúlio Vargas - São Paulo School of Business, CEAPG - Center for Public Administration and Government Studies
- Grand Valley State University, Dorothy A Johnson Center for Philanthropy
- Johns Hopkins University, Johns Hopkins Center for Civil Society Studies
- National University of Singapore , Asia Centre for Social Entrepreneurship and Philanthropy
- New York University, George H Heyman, Jr. Programme for Philanthropy and Fundraising
- Queensland University of Technology, Australian Centre for Philanthropy and Non-profit Studies
- Stanford University, Stanford Center on Philanthropy and Civil Society
- Swinburne University of Technology, Programme on Asia-Pacific Social Investment and Philanthropy, Centre for Social Impact
- The City University of New York, The Graduate Center, Center on Philanthropy and Civil Society
- University of Basel, Center for Philanthropy Studies (CEPS)
- University of Pennsylvania , Center for High Impact Philanthropy
- University of Pennsylvania, Non-profit Leadership Program
- University of Southern California, The Center on Philanthropy and Public Policy
- University of St Andrews, The Centre for the Study of Philanthropy & Public Good
- University of Texas, Austin Department of Sociology
- University of Witwatersrand, Wits Business School
- University of Yaoundé II, Faculty of Economics and Management

WHO ARE THE ACADEMIC/ EDUCATION INSTITUTIONS?

Most academic / education institutions are in North America and Europe

REGIONS WHERE ORGANIZATIONS SERVING PHILANTHROPY AND ACADEMIC/EDUCATION INSTITUTIONS ARE BASED

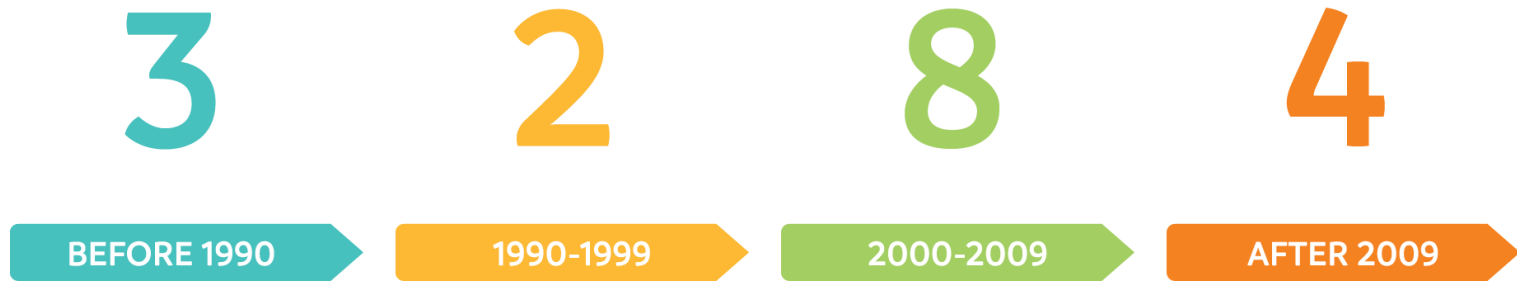


Source: WINGS member survey/ WINGS Academic Survey
Question: Organization's information: region/ Centre or programme information - Region
Number of responses: 63/18

WHO ARE THE ACADEMIC/ EDUCATION INSTITUTIONS?

Academic / education institutions' programmes or centers are young

PROGRAMME OR CENTRE'S YEAR OF FOUNDATION



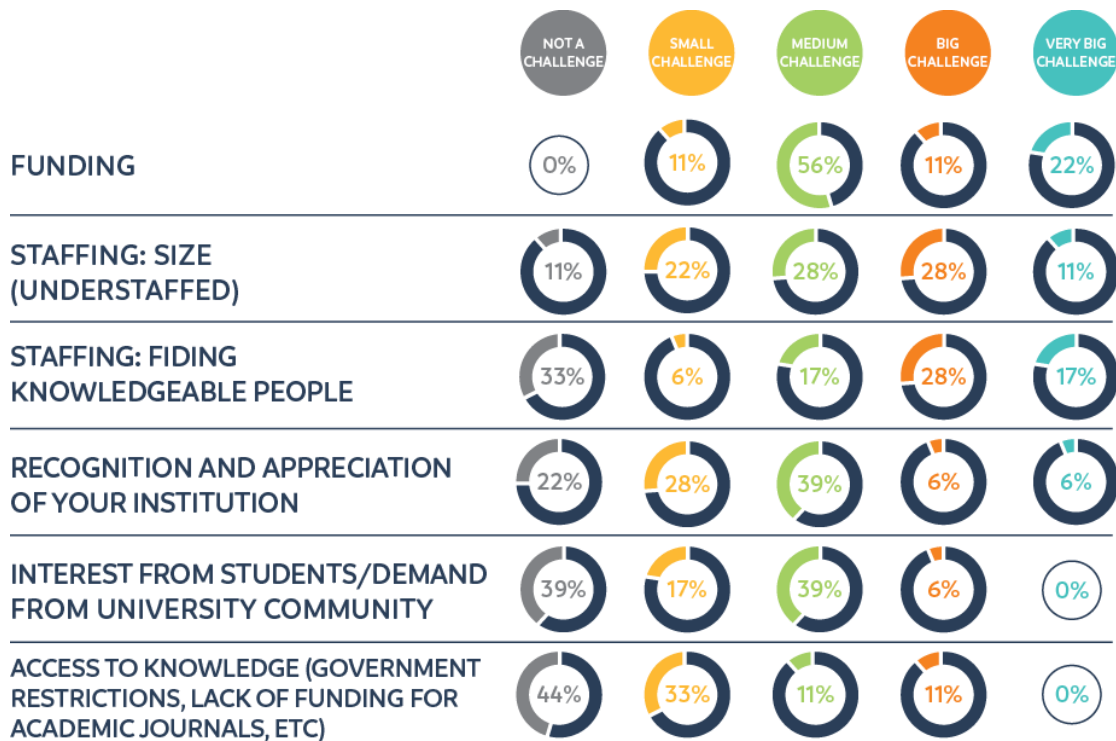
Source: WINGS academic survey
Question: What year was your centre or programme founded?
Number of responses: 17

Private gifts or grants are the most important source of income for academic/education institutions.

Of **13** who answered this question, private and individual sources were the most important in 7 cases; the host institution in 3 and earned income in 2.

Funding and capacity are the major challenges.

CHALLENGES THAT ACADEMIC/ EDUCATION INSTITUTIONS FACE



Source: WINGS academic survey
Question: How big are each of the following challenges facing your centre or programme, 1 being 'Not a challenge' and 5 being 'Very big challenge'?
Number of responses: 18

Most academic/ education institutions assess their financial sustainability as good, without major concerns.

HOW ACADEMIC/EDUCATION INSTITUTIONS ASSESS THEIR SUSTAINABILITY



Source: WINGS academic survey
Question: Overall, how would you assess your organization's sustainability?
Number of responses: 17

WHO ARE THE ACADEMIC/ EDUCATION INSTITUTIONS?

Research and teaching are the most important philanthropy-related services from academic/ education institutions.

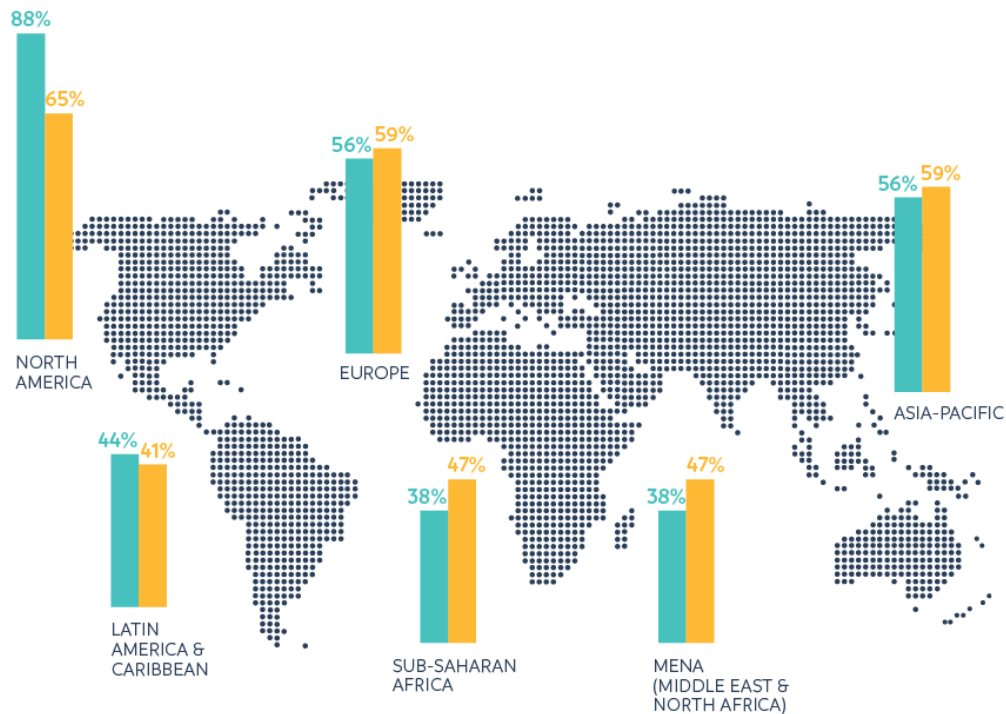
PHILANTHROPY-RELATED SERVICES FROM ACADEMIC/EDUCATION INSTITUTIONS



Source: WINGS academic survey
Question: What philanthropy-related services does your centre offer?
(multiple responses allowed)
Number of responses: 19

North America is the most covered region by teaching activities.

REGIONS COVERED BY TEACHING AND RESEARCH ACTIVITIES



Source: WINGS academic survey

Question: In your philanthropic teaching/research activities, which regions are covered? (multiple responses allowed)

Number of responses: 16/17

● TEACHING ACTIVITIES
● RESEARCH ACTIVITIES

Level of partnerships between WINGS' members and academic/ education institutions is high

39 WINGS members have at least one partnership with the academic/education institutions surveyed: **26** have one partnership, seven have two and six have three or more.

Philanthropy has typically a secondary role for most academic/ education institutions surveyed

PHILANTHROPY'S ROLE IN THE INSTITUTION/UNIVERSITY

Source: WINGS academic survey
Question: Please indicate which of the following statements applies to the larger institution or university to which your centre or programme belongs (multiple responses allowed)
Number of responses: 18



PHILANTHROPY IS ONE AREA OF RESEARCH AT OUR INSTITUTION/UNIVERSITY



PHILANTHROPY IS TAUGHT AS A COURSE WITHIN A NON-PHILANTHROPY SPECIFIC PROGRAMME OR DEPARTMENT



PHILANTHROPY IS A FOCUS AREA WITHIN A LARGER CENTER



PHILANTHROPY IS A DEGREE PROGRAMME



PHILANTHROPY IS A ESPECIFIC ACADEMIC DEPARTMENT



PHILANTHROPY IS A THE PRIMARY AREA OF RESEARCH AT OUR INSTITUTION/UNIVERSITY

WHO ARE THE ACADEMIC/ EDUCATION INSTITUTIONS?

Just one respondent has a dedicated philanthropy school. For most of them, philanthropy is taught in courses of business and public administration.

DEPARTMENTS AND SCHOOLS WHERE PHILANTHROPY COURSES ARE TAUGHT



Source: WINGS academic survey
Question: Which department(s)/schools are philanthropy courses taught in/cross-listed with? (multiple responses allowed)
Number of responses: 16

SURVEY RESULTS

**ACADEMIC / EDUCATION INSTITUTIONS
SERVING PHILANTHROPY**